

PREMIUM PRECISION PARTS VS. TYPICAL PARTS USED



At Precision Door Service, we pride ourselves in being able to provide our customers with the very best our industry has to offer. When it comes to our parts, we have done our research to figure out exactly what our customers need. We know this can be confusing if you don't work with garage doors every day, so we've put together this comparison to clearly explain the biggest differences that matter to you.

PRECISION



OTHERS

EXTENSION SPRINGS



We use a high cycle extension spring with a double hoop end to ensure **top-notch strength** and reliability.

Other companies will use a contractor grade spring that uses a loop end, which will weaken, break or fail more quickly over time.



TORSION SPRINGS



We use an e-coated torsion spring that protects from rust and damage which can last up to **5 times longer** than other springs.

Others will use a standard, non-coated torsion spring that will eventually rust and wear out over time.



CABLES



Precision uses stainless steel **aircraft grade** cables, which cause them to last longer than standard cables.

Other companies use standard cables that only utilize seven wires per strand, as opposed to Precision's nineteen per strand.

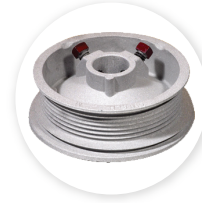


CABLE DRUMS



Our drums are much wider giving them an **anti-slip** feature missing from standard drums.

Other companies use drums that are made out of a lower grade steel, so they tend to not last as long or be able to withstand as much weight as ours.



866-737-8255
www.PrecisionDoorNC.com



**PRECISION****OTHERS**

ROLLERS



Precision uses rollers that have a sealed 13-ball bearing, making them much quieter. They have been tested above **100,000 cycles** and never need to be lubed.

Other companies will use a standard steel or plastic roller that shake and eventually wear down beyond use.

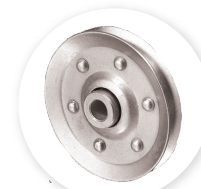


PULLEYS



Precision uses a cast iron pulley for **strength and durability**. The no-seam design ensures cables roll through pulleys smoothly.

Other companies use a light-duty sheave pulley. These will eventually separate and cause the door to strain severely.



CENTER BEARING



Precision uses a center bearing that utilizes bearings to help assist the entire torsion system to **operate smoothly**.

Other companies will use a center bearing that is made of plastic, has no bearings, and only provides center support.

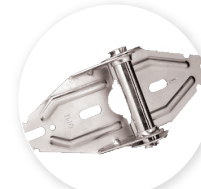


HINGES

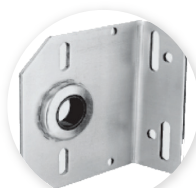


Our hinges use a **thicker steel**, which means no cracking or breaking.

Other companies use lightweight steel causing them to be flimsy and break or snap more easily.

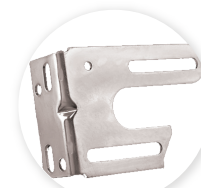


CENTER BEARING BRACKET

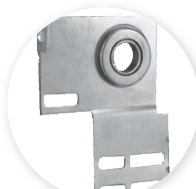


Precision uses a center bearing bracket that is made out of **thicker steel** and does not bind the torsion system.

Other center bearing brackets are made out of lower grade steel, causing them to flex and bend during use.

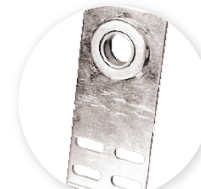


END BEARING BRACKETS



Our end bearing plates bolt directly to the track and wall, giving them **four connection points** in order to prevent binding of the torsion system.

Others use end bearing brackets made of un-reinforced steel, and only have two points in which they are secured.



866-737-8255
www.PrecisionDoorNC.com

